

# \$5,000,000 - 7550 Ellerslie Road, Edmonton

MLS® #E4463689

**\$5,000,000**

6 Bedroom, 4.00 Bathroom, 3,697 sqft  
Single Family on 0.00 Acres

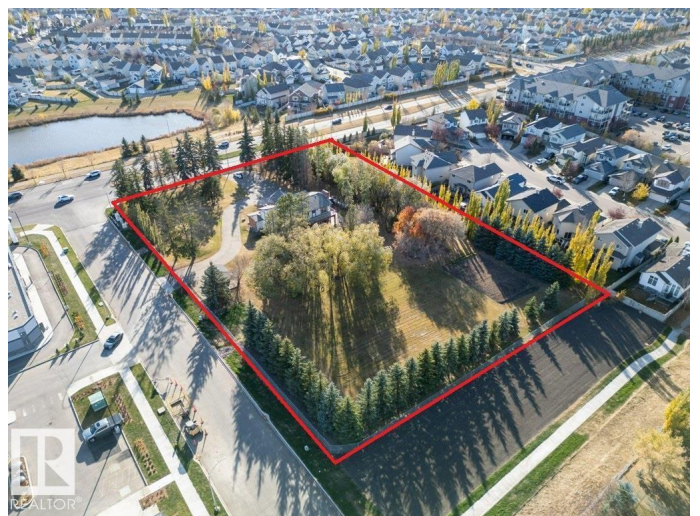
Ellerslie, Edmonton, AB

Discover the ultimate development opportunity with this unique 2.07-acre property on Main Ellerslie Road. The well-maintained, nearly 3,700 sq. ft. home offers immediate comfortable living with 5 bedrooms, 4 bathrooms, and a sauna. Features include a triple attached heated garage, delightful retro-style finishings, a second-floor balcony, and a main-floor patio. Recent city service line upgrades to the property enhance the value. Boasting multi-side access, this is a prime investment with significant Possible future redevelopment potential for Mixed-Use, Commercial, or Multi-Family Housing. A truly one-of-a-kind parcel combining space, location, and potential!

Built in 1979

## Essential Information

MLS® #	E4463689
Price	\$5,000,000
Bedrooms	6
Bathrooms	4.00
Full Baths	4
Square Footage	3,697
Acres	0.00
Year Built	1979
Type	Single Family



Sub-Type	Detached Single Family
Style	2 Storey
Status	Active

### **Community Information**

Address	7550 Ellerslie Road
Area	Edmonton
Subdivision	Ellerslie
City	Edmonton
County	ALBERTA
Province	AB
Postal Code	T6X 1A3

### **Amenities**

Amenities	Air Conditioner, Barbecue-Built-In, Carbon Monoxide Detectors, Closet Organizers, Detectors Smoke, Hot Water Natural Gas, No Animal Home, No Smoking Home, Sauna; Swirlpool; Steam, Security Door, Wet Bar
Parking Spaces	9
Parking	Triple Garage Attached

### **Interior**

Interior Features	ensuite bathroom
Appliances	Air Conditioning-Central, Dishwasher - Energy Star, Dryer, Garage Control, Garage Opener, Hood Fan, Oven-Built-In, Oven-Microwave, Refrigerator, Refrigerator-Energy Star, Stove-Countertop Electric, Vacuum System Attachments, Washer - Energy Star, Water Distiller, Water Softener
Heating	Forced Air-2, Natural Gas
Fireplace	Yes
Fireplaces	Mantel
Stories	3
Has Basement	Yes
Basement	Full, Finished

### **Exterior**

Exterior	Wood, Brick, Stucco
Exterior Features	Commercial, Corner Lot, Fenced, Playground Nearby, Schools, Shopping Nearby, Treed Lot, Vegetable Garden, View Lake
Roof	Cedar Shakes
Construction	Wood, Brick, Stucco

Foundation Concrete Perimeter

### **School Information**

Elementary Ellerslie Primary

Middle Ellerslie Campus

### **Additional Information**

Date Listed October 27th, 2025

Days on Market 10

Zoning Zone 53

DATA IS DEEMED RELIABLE BUT IS NOT GUARANTEED ACCURATE BY THE REALTORS® ASSOCIATION OF EDMONTON. COPYRIGHT 2025 BY THE REALTORS® ASSOCIATION OF EDMONTON. ALL RIGHTS RESERVED. Trademarks are owned or controlled by the Canadian Real Estate Association (CREA) and identify real estate professionals who are members of CREA (REALTOR®, REALTORS®) and/or the quality of services they provide (MLS®, Multiple Listing Service®)

Listing information last updated on November 6th, 2025 at 3:02pm MST