

\$209,900 - 402 1080 Mcconachie Blvd, Edmonton

MLS® #E4458215

\$209,900

2 Bedroom, 2.00 Bathroom, 880 sqft
Condo / Townhouse on 0.00 Acres

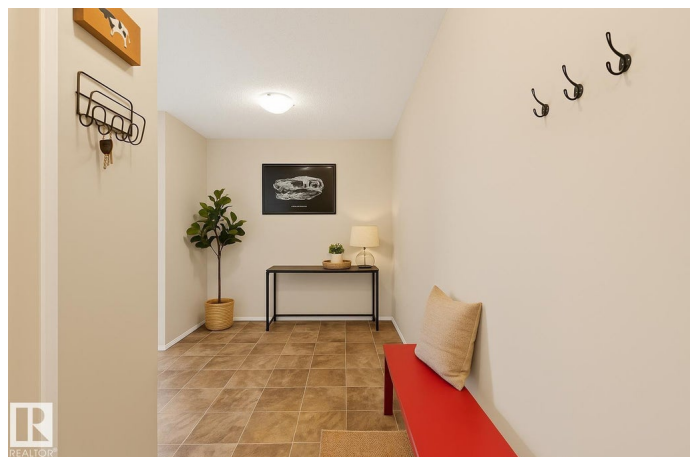
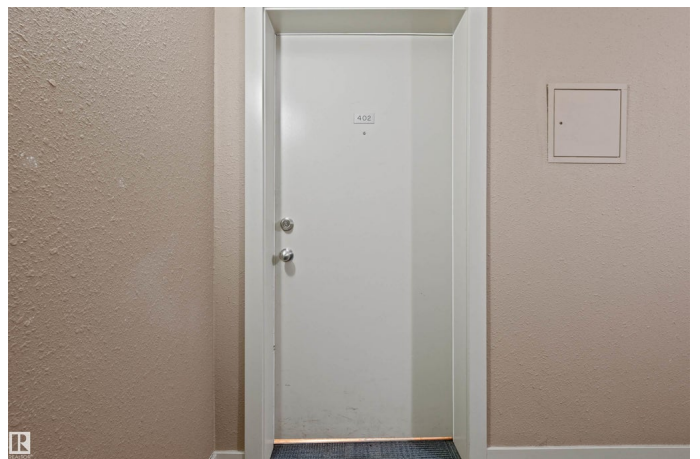
McConachie Area, Edmonton, AB

Top-floor corner unit offering 879 sq ft of bright, open-concept living. Thoughtfully designed with two bedrooms separated for added sound privacy. The welcoming front entry doubles as an open den—perfect for a home office or study nook. The modern kitchen features granite countertops, stainless steel appliances, and plenty of workspace for everyday living or entertaining. Large windows fill the space with natural light, enhancing the spacious feel throughout. Located close to schools with convenient access to the Anthony Henday Ring Road for an easy commute. Comes with two titled parking stalls—one secure underground stall and one surface stall for added flexibility.

Built in 2013

Essential Information

MLS® #	E4458215
Price	\$209,900
Bedrooms	2
Bathrooms	2.00
Full Baths	2
Square Footage	880
Acres	0.00
Year Built	2013
Type	Condo / Townhouse



Sub-Type Lowrise Apartment
Style Single Level Apartment
Status Active

Community Information

Address 402 1080 McConachie Blvd
Area Edmonton
Subdivision McConachie Area
City Edmonton
County ALBERTA
Province AB
Postal Code T5Y 0X2

Amenities

Amenities Detectors Smoke, Parking-Visitor, Security Door, Sprinkler System-Fire
Parking Spaces 2
Parking Heated, Stall, Underground

Interior

Interior Features ensuite bathroom
Appliances Dishwasher-Built-In, Dryer, Microwave Hood Fan, Refrigerator,
Stove-Electric, Washer, Window Coverings
Heating Baseboard, Hot Water, Natural Gas
of Stories 4
Stories 1
Has Basement Yes
Basement None, No Basement

Exterior

Exterior Wood, Stone, Vinyl
Exterior Features Picnic Area, Playground Nearby, Public Transportation, Schools,
Shopping Nearby
Roof Asphalt Shingles
Construction Wood, Stone, Vinyl
Foundation Concrete Perimeter

Additional Information

Date Listed September 17th, 2025
Days on Market 1

Zoning	Zone 03
Condo Fee	\$522

DATA IS DEEMED RELIABLE BUT IS NOT GUARANTEED ACCURATE BY THE REALTORS® ASSOCIATION OF EDMONTON. COPYRIGHT 2025 BY THE REALTORS® ASSOCIATION OF EDMONTON. ALL RIGHTS RESERVED. Trademarks are owned or controlled by the Canadian Real Estate Association (CREA) and identify real estate professionals who are members of CREA (REALTOR®, REALTORS®) and/or the quality of services they provide (MLS®, Multiple Listing Service®)

Listing information last updated on September 18th, 2025 at 8:17am MDT