

## \$599,900 - 3239 Pelerin Crescent, Beaumont

MLS® #E4455482

**\$599,900**

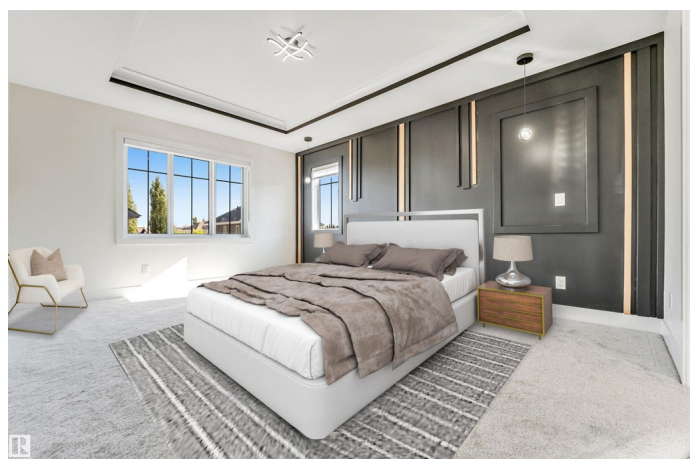
4 Bedroom, 4.00 Bathroom, 2,174 sqft

Single Family on 0.00 Acres

Place Chaleureuse, Beaumont, AB

This stunning modern home truly has it all—2 MASTER BEDROOMS, SPICE KITCHEN, OPEN-TO-BELOW LIVING ROOM, and MAIN FLOOR BEDROOM WITH FULL BATH.

Designed with elegance and functionality in mind, the home boasts numerous upgrades, including BUILT-IN APPLIANCES, BOTH ELECTRIC & GAS STOVETOPS, and an EPOXY-COATED DOUBLE-CAR GARAGE. The MAIN FLOOR offers a bright OPEN-CONCEPT layout with 9 FT CEILINGS, OPEN-TO-BELOW LIVING ROOM that brings in natural sunlight, GOURMET KITCHEN + SPICE KITCHEN, and a BEDROOM WITH FULL BATH. Upstairs, you'll find 2 LUXURIOUS MASTER BEDROOMS WITH ENSUITES, a THIRD SPACIOUS BEDROOM, and an ADDITIONAL FULL BATHROOM, along with a CONVENIENT UPSTAIRS LAUNDRY. The UNFINISHED 9 FT BASEMENT WITH LEGAL SIDE ENTRY provides endless opportunities to customize—whether for a FUTURE LEGAL SUITE, RECREATION SPACE, or ADDITIONAL LIVING AREA. Some pictures are virtually staged.



Built in 2023

### Essential Information

MLS® #

E4455482

Price	\$599,900
Bedrooms	4
Bathrooms	4.00
Full Baths	4
Square Footage	2,174
Acres	0.00
Year Built	2023
Type	Single Family
Sub-Type	Detached Single Family
Style	2 Storey
Status	Active

### Community Information

Address	3239 Pelerin Crescent
Area	Beaumont
Subdivision	Place Chaleureuse
City	Beaumont
County	ALBERTA
Province	AB
Postal Code	T4X 2Z1

### Amenities

Amenities	Ceiling 9 ft., 9 ft. Basement Ceiling
Parking	Double Garage Attached

### Interior

Interior Features	ensuite bathroom
Appliances	Dishwasher-Built-In, Dryer, Hood Fan, Oven-Built-In, Refrigerator, Stove-Countertop Electric, Stove-Countertop Gas, Washer, Window Coverings
Heating	Forced Air-1, Natural Gas
Stories	2
Has Basement	Yes
Basement	Full, Unfinished

### Exterior

Exterior	Wood, Asphalt, Vinyl
Exterior Features	Airport Nearby, Fenced, Landscaped, Park/Reserve, Playground Nearby, See Remarks

Roof	Asphalt Shingles
Construction	Wood, Asphalt, Vinyl
Foundation	Concrete Perimeter

**Additional Information**

Date Listed	August 30th, 2025
Days on Market	2
Zoning	Zone 82

DATA IS DEEMED RELIABLE BUT IS NOT GUARANTEED ACCURATE BY THE REALTORS® ASSOCIATION OF EDMONTON. COPYRIGHT 2025 BY THE REALTORS® ASSOCIATION OF EDMONTON. ALL RIGHTS RESERVED.Trademarks are owned or controlled by the Canadian Real Estate Association (CREA) and identify real estate professionals who are members of CREA (REALTOR®, REALTORS®) and/or the quality of services they provide (MLS®, Multiple Listing Service®)

Listing information last updated on September 1st, 2025 at 1:17am MDT