

Courtesy Of Nadia Glavonjic Of Sterling Real Estate

\$649,900 - 9 Sydwyck Circle, Spruce Grove

MLS® #E4455480

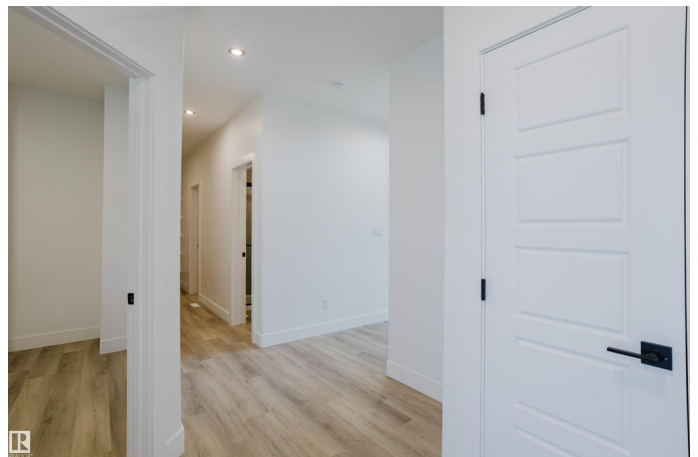
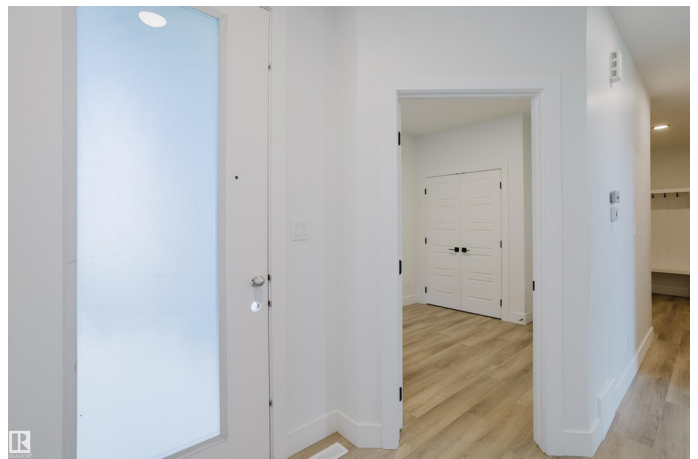
\$649,900

4 Bedroom, 3.00 Bathroom, 2,539 sqft

Single Family on 0.00 Acres

Fenwyck, Spruce Grove, AB

Welcome to this exceptional brand-new residence in the highly sought-after community of Fenwyck, Spruce Grove—where luxury, comfort, and thoughtful design come together in perfect harmony. This spacious home features a rare triple attached garage and a convenient side entrance, ideal for car enthusiasts, multi-generational living, or future suite potential. Inside, the bright main floor includes a well-appointed bedroom and full bath, perfect for guests. The heart of the home is the breathtaking open-to-below living room with soaring ceilings, a striking fireplace, and elegant glass railing that enhances the open-concept design. The extended gourmet kitchen boasts sleek quartz countertops, premium cabinetry, and a large walk-through pantry with shelving that connect to the mudroom. Stylish vinyl plank flooring adds elegance throughout. Upstairs, enjoy three spacious bedrooms, a versatile bonus room, and a luxurious primary suite. A private deck backs onto a tranquil walkway and nearby nature.



Built in 2025

Essential Information

MLS® # E4455480

Price \$649,900

Bedrooms	4
Bathrooms	3.00
Full Baths	3
Square Footage	2,539
Acres	0.00
Year Built	2025
Type	Single Family
Sub-Type	Detached Single Family
Style	2 Storey
Status	Active

Community Information

Address	9 Sydwyck Circle
Area	Spruce Grove
Subdivision	Fenwyck
City	Spruce Grove
County	ALBERTA
Province	AB
Postal Code	T7X 4C9

Amenities

Amenities	Ceiling 9 ft., Closet Organizers, Deck, Exterior Walls- 2"x6", Hot Water Tankless, No Animal Home, No Smoking Home, Vinyl Windows
Parking	Triple Garage Attached

Interior

Interior Features	ensuite bathroom
Appliances	Garage Control, Garage Opener, Hood Fan
Heating	Forced Air-1, Natural Gas
Fireplace	Yes
Fireplaces	Remote Control
Stories	2
Has Basement	Yes
Basement	Full, Unfinished

Exterior

Exterior	Wood, Stone, Vinyl
Exterior Features	Playground Nearby, Schools, Shopping Nearby
Roof	Asphalt Shingles

Construction	Wood, Stone, Vinyl
Foundation	Concrete Perimeter

Additional Information

Date Listed	August 30th, 2025
Days on Market	2
Zoning	Zone 91

DATA IS DEEMED RELIABLE BUT IS NOT GUARANTEED ACCURATE BY THE REALTORS® ASSOCIATION OF EDMONTON. COPYRIGHT 2025 BY THE REALTORS® ASSOCIATION OF EDMONTON. ALL RIGHTS RESERVED.Trademarks are owned or controlled by the Canadian Real Estate Association (CREA) and identify real estate professionals who are members of CREA (REALTOR®, REALTORS®) and/or the quality of services they provide (MLS®, Multiple Listing Service®)

Listing information last updated on September 1st, 2025 at 1:17am MDT