

\$609,000 - 9417 Pear Crescent, Edmonton

MLS® #E4448032

\$609,000

4 Bedroom, 3.50 Bathroom, 1,916 sqft

Single Family on 0.00 Acres

The Orchards At Ellerslie, Edmonton, AB

Welcome to this beautiful 2022-built 4 bedroom, 3.5 bathroom home in the desirable community of Orchards. Enjoy peaceful mornings on the extended deck and patio with no rear neighboursâ€™ just green space. The fully finished basement with separate side entry includes a bedroom, full bath, stacked laundry, and second kitchen. Step into a bright, open-to-above foyer, leading to a spacious, functional kitchen with a large island and walk-in pantry. Upstairs offers a roomy bonus area, convenient laundry room, and a primary suite with walk-in closet, ensuite, soaker tub, and separate shower. Natural light fills the home through large windows, and central A/C adds year-round comfort. A perfect blend of style, space, and convenienceâ€™this home has it all!

Built in 2022

Essential Information

MLS® #	E4448032
Price	\$609,000
Bedrooms	4
Bathrooms	3.50
Full Baths	3
Half Baths	1
Square Footage	1,916
Acres	0.00



Year Built	2022
Type	Single Family
Sub-Type	Detached Single Family
Style	2 Storey
Status	Active

Community Information

Address	9417 Pear Crescent
Area	Edmonton
Subdivision	The Orchards At Ellerslie
City	Edmonton
County	ALBERTA
Province	AB
Postal Code	T6X 2Z5

Amenities

Amenities	Air Conditioner, Carbon Monoxide Detectors, Ceiling 9 ft., Deck
Parking Spaces	4
Parking	Double Garage Attached

Interior

Interior Features	ensuite bathroom
Appliances	Air Conditioning-Central, Dishwasher-Built-In, Garage Control, Garage Opener, Window Coverings, Dryer-Two, Refrigerators-Two, Stoves-Two, Washers-Two, Microwave Hood Fan-Two, TV Wall Mount
Heating	Forced Air-1, Natural Gas
Stories	3
Has Basement	Yes
Basement	Full, Finished

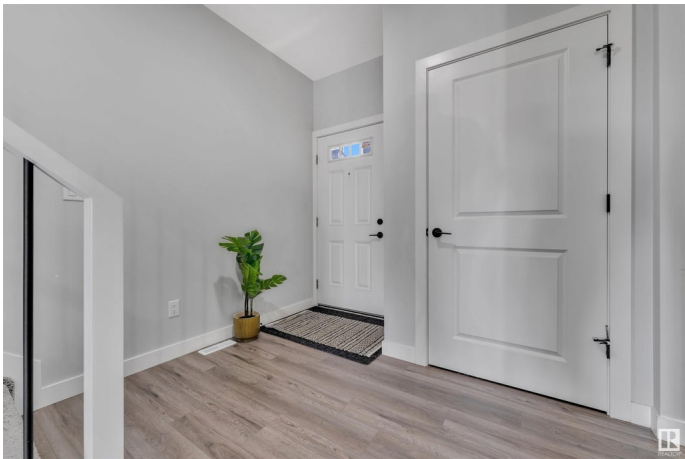
Exterior

Exterior	Wood, Stone, Vinyl
Exterior Features	Airport Nearby, Backs Onto Park/Trees, Fenced, Landscaped, Playground Nearby, Schools
Roof	Asphalt Shingles
Construction	Wood, Stone, Vinyl
Foundation	Concrete Perimeter

Additional Information

Date Listed	July 16th, 2025
-------------	-----------------

Days on Market 2
Zoning Zone 53



DATA IS DEEMED RELIABLE BUT IS NOT GUARANTEED ACCURATE BY THE REALTORS® ASSOCIATION OF EDMONTON. COPYRIGHT 2025 BY THE REALTORS® ASSOCIATION OF EDMONTON. ALL RIGHTS RESERVED.Trademarks are owned or controlled by the Canadian Real Estate Association (CREA) and identify real estate professionals who are members of CREA (REALTOR®, REALTORS®) and/or the quality of services they provide (MLS®, Multiple Listing Service®)
Listing information last updated on July 17th, 2025 at 11:02pm MDT