

## \$519,000 - 8619 80 Street, Edmonton

MLS® #E4446591

### \$519,000

4 Bedroom, 2.00 Bathroom, 906 sqft

Single Family on 0.00 Acres

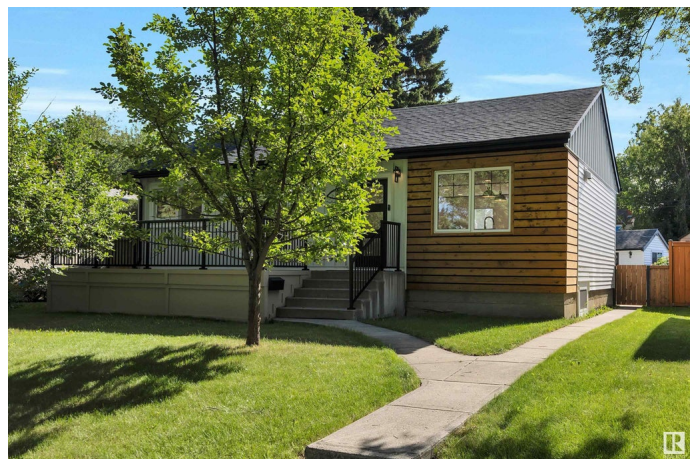
Idylwylde, Edmonton, AB

Located on a quiet tree lined street in Idylwylde, just blocks away from the LRT, shopping, public swimming and schools, this renovated four bedroom bungalow awaits. With creamy floors, soft colours, open concept design, tons of natural light and beautiful finishes, you will fall in love with this peaceful and beautiful space. The basement features tons of storage in the brand new laundry room and mechanical room, two amazing size bedrooms and a comfy family room for movie nights. Unlike most small bungalows, this one has a utility, linen and coat closet on the main floor as well a great size pantry off the brand new elegant kitchen. Stretch out and enjoy the 547m<sup>2</sup> lot, fully fenced, very spacious and two beautiful apple trees.

Built in 1952

### Essential Information

MLS® #	E4446591
Price	\$519,000
Bedrooms	4
Bathrooms	2.00
Full Baths	2
Square Footage	906
Acres	0.00
Year Built	1952



Type	Single Family
Sub-Type	Detached Single Family
Style	Bungalow
Status	Active

### Community Information

Address	8619 80 Street
Area	Edmonton
Subdivision	Idylwylde
City	Edmonton
County	ALBERTA
Province	AB
Postal Code	T6C 2S8

### Amenities

Amenities	On Street Parking, Carbon Monoxide Detectors, Deck, Detectors Smoke, Front Porch, Hot Water Natural Gas, No Smoking Home, Parking-Extra, Smart/Program. Thermostat, Vinyl Windows
Parking	Single Garage Detached

### Interior

Appliances	Dishwasher-Built-In, Dryer, Refrigerator, Stove-Electric, Washer
Heating	Forced Air-1, Natural Gas
Stories	2
Has Basement	Yes
Basement	Full, Finished

### Exterior

Exterior	Wood, Metal, Vinyl
Exterior Features	Back Lane, Fenced, Fruit Trees/Shrubs, Low Maintenance Landscape, Public Transportation, Schools, Shopping Nearby
Roof	Asphalt Shingles
Construction	Wood, Metal, Vinyl
Foundation	Concrete Perimeter

### Additional Information

Date Listed	July 8th, 2025
Days on Market	69
Zoning	Zone 18

DATA IS DEEMED RELIABLE BUT IS NOT GUARANTEED ACCURATE BY THE REALTORS® ASSOCIATION OF EDMONTON. COPYRIGHT 2025 BY THE REALTORS® ASSOCIATION OF EDMONTON. ALL RIGHTS RESERVED.Trademarks are owned or controlled by the Canadian Real Estate Association (CREA) and identify real estate professionals who are members of CREA (REALTOR®, REALTORS®) and/or the quality of services they provide (MLS®, Multiple Listing Service®)

Listing information last updated on September 14th, 2025 at 9:47pm MDT