

\$229,000 - 18525 66 Avenue, Edmonton

MLS® #E4446199

\$229,000

4 Bedroom, 2.50 Bathroom, 979 sqft

Condo / Townhouse on 0.00 Acres

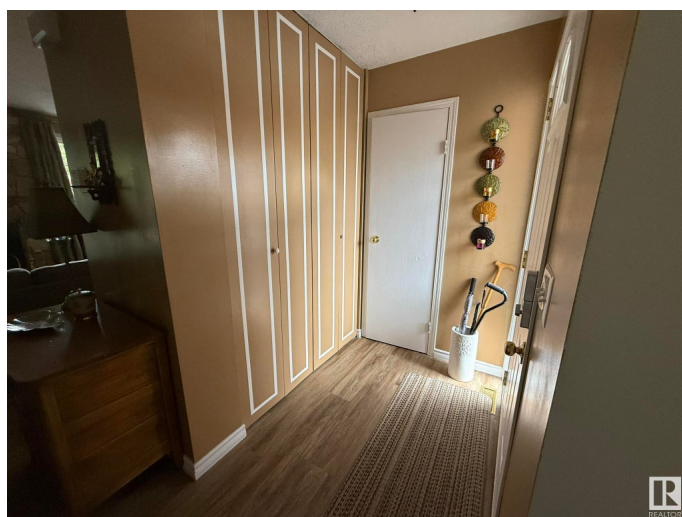
Ormsby Place, Edmonton, AB

****Beautifully Maintained Two-Story Townhome in West End**** This spacious and well-cared-for townhome is ideally located in the desirable West End, close to all essential amenities. Featuring ****3+1 bedrooms****, ****2.5 bathrooms****, and ****two full kitchens****, it offers exceptional flexibility for families. Enjoy cozy evenings by the ****wood-burning fireplace****, or step outside to a ****private backyard**** that backs onto peaceful green space—perfect for relaxing or entertaining. Additional highlights include: - ****Reasonable condo fees**** - ****Two outdoor parking stalls**** - A layout that balances comfort, privacy, and convenience Donâ€™t miss the opportunity to own this versatile and inviting home in a prime location!

Built in 1978

Essential Information

MLS® #	E4446199
Price	\$229,000
Bedrooms	4
Bathrooms	2.50
Full Baths	2
Half Baths	1
Square Footage	979
Acres	0.00
Year Built	1978



Type	Condo / Townhouse
Sub-Type	Townhouse
Style	2 Storey
Status	Active

Community Information

Address	18525 66 Avenue
Area	Edmonton
Subdivision	Ormsby Place
City	Edmonton
County	ALBERTA
Province	AB
Postal Code	T5T 2M3

Amenities

Amenities	No Animal Home
Parking Spaces	2
Parking	Single Carport, Stall

Interior

Appliances	Dishwasher-Built-In, Dryer, Microwave Hood Fan, Washer, Refrigerators-Two, Stoves-Two
Heating	Forced Air-1, Natural Gas
Fireplace	Yes
Fireplaces	Brick Facing
Stories	3
Has Suite	Yes
Has Basement	Yes
Basement	Full, Finished

Exterior

Exterior	Wood
Exterior Features	Fenced, Landscaped, Low Maintenance Landscape, Schools
Roof	Asphalt Shingles
Construction	Wood
Foundation	Concrete Perimeter

Additional Information

Date Listed	July 6th, 2025
-------------	----------------

Days on Market	59
Zoning	Zone 20
Condo Fee	\$412



DATA IS DEEMED RELIABLE BUT IS NOT GUARANTEED ACCURATE BY THE REALTORS® ASSOCIATION OF EDMONTON. COPYRIGHT 2025 BY THE REALTORS® ASSOCIATION OF EDMONTON. ALL RIGHTS RESERVED. Trademarks are owned or controlled by the Canadian Real Estate Association (CREA) and identify real estate professionals who are members of CREA (REALTOR®, REALTORS®) and/or the quality of services they provide (MLS®, Multiple Listing Service®)

Listing information last updated on September 3rd, 2025 at 12:32am MDT