

\$1,100,000 - 42 Laderoute Place, St. Albert

MLS® #E4443315

\$1,100,000

4 Bedroom, 3.50 Bathroom, 2,375 sqft

Single Family on 0.00 Acres

Lacombe Park, St. Albert, AB

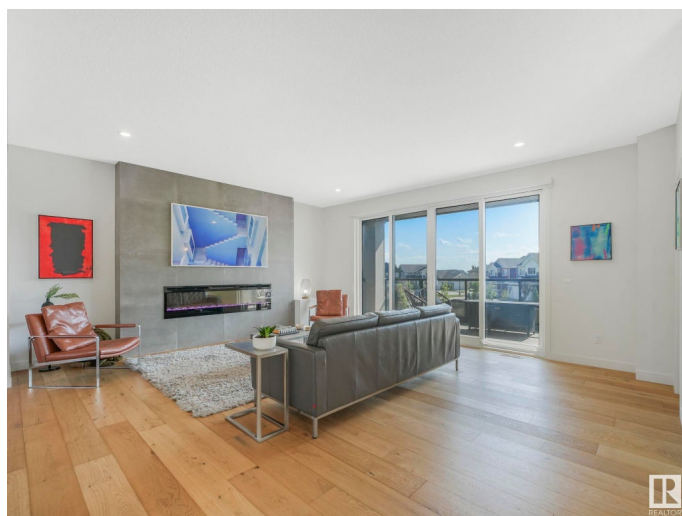
Modern luxury surrounded by nature in this custom-built Sarasota home in Lacombe Park Estates. Tucked in a quiet cul-de-sac on a huge pie lot, this stunning home backs onto the trees and trails of Lacombe Lake Park where you can enjoy walking, biking, skating, fishing, dog park and more! This home offers 3164+ sq ft of thoughtful living space with 4 bedrooms, 3.5 bathrooms, plus main floor den and upper floor laundry. Chef's kitchen features two-tone cabinetry and upgraded s/s appliances plus large windows that flood the space with natural light. Upstairs are 3 large bedrooms with vaulted ceilings & walk-in closets including the generous primary suite with a spa-like ensuite and direct laundry access. Fully finished basement has family room with wet bar, 4th bedroom, 4 pc bath and access to the HEATED garage. Relax on the maintenance-free deck overlooking the professionally landscaped yard w/ pads for future hot tub & shed. Immaculately kept with designer finishes throughout—this is your dream home!

Built in 2020

Essential Information

MLS® # E4443315

Price \$1,100,000



Bedrooms	4
Bathrooms	3.50
Full Baths	3
Half Baths	1
Square Footage	2,375
Acres	0.00
Year Built	2020
Type	Single Family
Sub-Type	Detached Single Family
Style	2 Storey
Status	Active

Community Information

Address	42 Laderoute Place
Area	St. Albert
Subdivision	Lacombe Park
City	St. Albert
County	ALBERTA
Province	AB
Postal Code	T8N 7R2

Amenities

Amenities	Air Conditioner, Deck, No Animal Home, No Smoking Home, Vinyl Windows
Parking Spaces	4
Parking	Double Garage Attached

Interior

Interior Features	ensuite bathroom
Appliances	Air Conditioning-Central, Dishwasher-Built-In, Dryer, Garage Control, Garage Opener, Hood Fan, Oven-Microwave, Refrigerator, Stove-Gas, Washer, Window Coverings, TV Wall Mount, Garage Heater
Heating	Forced Air-1, Natural Gas
Fireplace	Yes
Fireplaces	Tile Surround
Stories	3
Has Basement	Yes
Basement	Full, Finished

Exterior

Exterior	Wood, Fiber Cement, Metal, Vinyl
Exterior Features	Backs Onto Park/Trees, Cul-De-Sac, Fenced, Golf Nearby, No Back Lane, No Through Road, Park/Reserve, Playground Nearby
Roof	Asphalt Shingles
Construction	Wood, Fiber Cement, Metal, Vinyl
Foundation	Concrete Perimeter

School Information

Elementary	RonaldHarvey,BerthaKennedy
Middle	VJM, WD Cuts
High	Bellrose, SACHS

Additional Information

Date Listed	June 19th, 2025
Days on Market	72
Zoning	Zone 24

DATA IS DEEMED RELIABLE BUT IS NOT GUARANTEED ACCURATE BY THE REALTORS® ASSOCIATION OF EDMONTON. COPYRIGHT 2025 BY THE REALTORS® ASSOCIATION OF EDMONTON. ALL RIGHTS RESERVED.Trademarks are owned or controlled by the Canadian Real Estate Association (CREA) and identify real estate professionals who are members of CREA (REALTOR®, REALTORS®) and/or the quality of services they provide (MLS®, Multiple Listing Service®)

Listing information last updated on August 30th, 2025 at 5:32pm MDT