

\$418,000 - 7107 22 Avenue, Edmonton

MLS® #E4442651

\$418,000

2 Bedroom, 2.50 Bathroom, 1,244 sqft

Single Family on 0.00 Acres

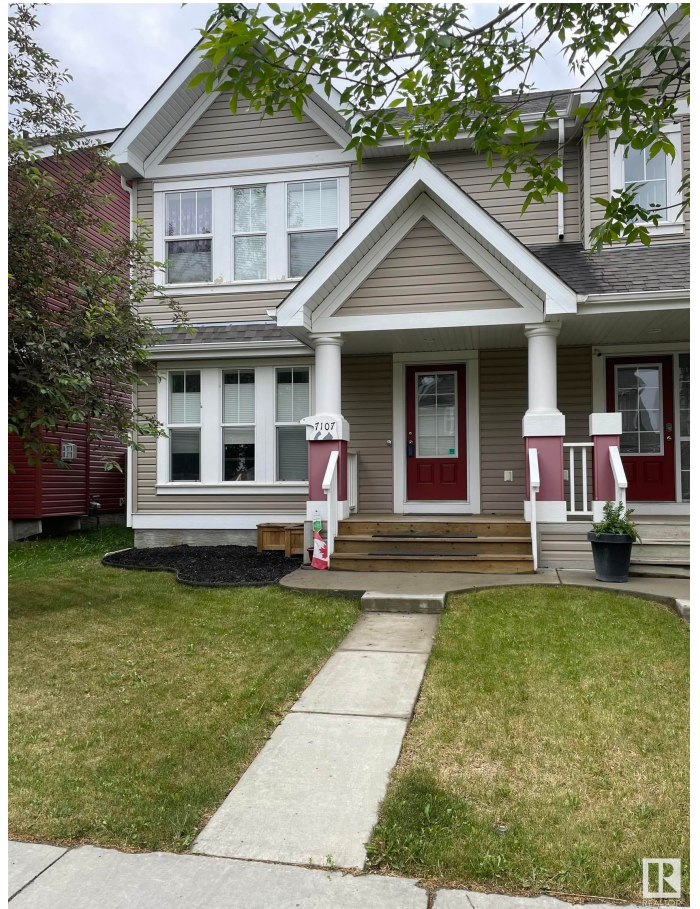
Summerside, Edmonton, AB

EXECUTIVE LIVING IN SUMMERSIDE- One of Edmonton's most sought after neighbourhoods. Lake & playground access for family fun and entertainment adds to the enjoyment of living in Summerside. The main floor open concept is bright and sunny with a bonus linear fireplace to add warmth to this lovely home. A newer furnace also adds to the homes value. The well designed kitchen is perfect for family celebrations and making memories together. Head upstairs and you will find 2 generous sized bedrooms, main bath and primary bedroom ensuite and walk in closet. Along with a loft/bonus room/ office or flex space for your personal choosing. Backyard is developed to take advantage of sunny days on the patio with friends and a refreshing beverage! Summerside area offers amazing walking trails, top restaurants as well as great shopping & amenities. Convenient access to major transportation corridors. A fabulous home and location - IT'S ALL HERE!

Built in 2012

Essential Information

MLS® #	E4442651
Price	\$418,000
Bedrooms	2
Bathrooms	2.50



Full Baths	2
Half Baths	1
Square Footage	1,244
Acres	0.00
Year Built	2012
Type	Single Family
Sub-Type	Half Duplex
Style	2 Storey
Status	Active

Community Information

Address	7107 22 Avenue
Area	Edmonton
Subdivision	Summerside
City	Edmonton
County	ALBERTA
Province	AB
Postal Code	T6X 0T8

Amenities

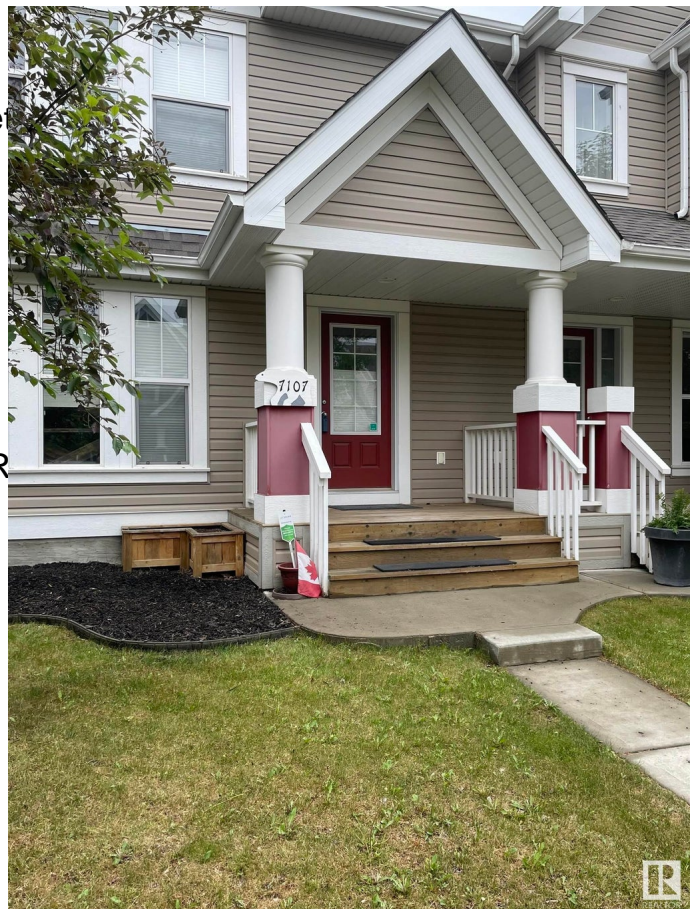
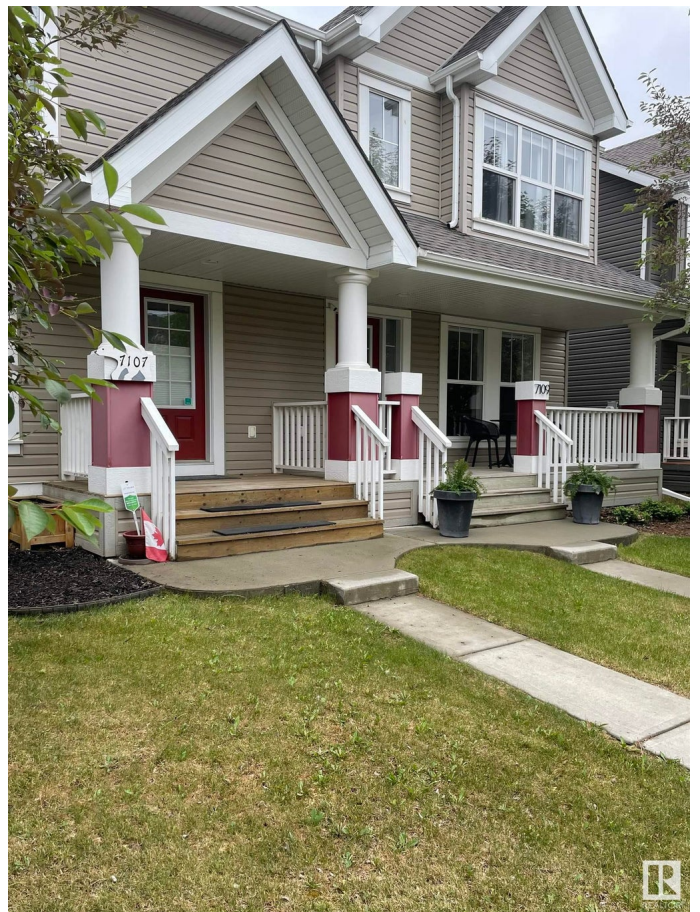
Amenities	On Street Parking, Close Privileges, Vinyl Windows
Parking Spaces	4
Parking	Double Garage Detached

Interior

Interior Features	ensuite bathroom
Appliances	Dishwasher-Built-In, Dryer, R
Heating	Forced Air-1, Natural Gas
Fireplace	Yes
Fireplaces	Glass Door
Stories	2
Has Basement	Yes
Basement	Full, Unfinished

Exterior

Exterior	Wood, Vinyl
Exterior Features	Fenced, Landscaped, Playground Nearby, Public Transportation, Schools, Shopping Nearby, See Remarks



Roof	Asphalt Shingles
Construction	Wood, Vinyl
Foundation	Concrete Perimeter

Additional Information

Date Listed	June 16th, 2025
Days on Market	4
Zoning	Zone 53
HOA Fees	450
HOA Fees Freq.	Annually

DATA IS DEEMED RELIABLE BUT IS NOT GUARANTEED ACCURATE BY THE REALTORS® ASSOCIATION OF EDMONTON. COPYRIGHT 2025 BY THE REALTORS® ASSOCIATION OF EDMONTON. ALL RIGHTS RESERVED. Trademarks are owned or controlled by the Canadian Real Estate Association (CREA) and identify real estate professionals who are members of CREA (REALTOR®, REALTORS®) and/or the quality of services they provide (MLS®, Multiple Listing Service®)

Listing information last updated on June 20th, 2025 at 1:02pm MDT