

## \$179,000 - 1003 10160 116 Street, Edmonton

MLS® #E4441571

**\$179,000**

2 Bedroom, 1.00 Bathroom, 1,059 sqft

Condo / Townhouse on 0.00 Acres

W&#x26;#x2013;h&#x26;#x2013;w&#x26;#x2013;ant&#x26;#x2013;win, Edmonton, AB

Visit the Listing Brokerage (and/or listing REALTOR®) website to obtain additional info. Condo in the nicely located Centurian Tower in the heart of Oliver- one of Edmonton's top neighborhoods! Upgraded, condo with stunning west-facing views. Good-sized rooms throughout - a large living room, an open-concept kitchen with upgraded stainless steel appliances (dishwasher, refrigerator, stove, & microwave with hood fan). A lovely dining area, very large master bedroom & a good-sized second bedroom too. Nice upgrades including cabinetry, flooring, granite countertops & backsplash, and a refreshed 4-piece bathroom. A spacious 16â€™™ balcony allows you to enjoy the beautiful city view! The corner unit in a quiet concrete building, plus you're in the prime location with all amenities- shopping, bus, LRT, river valley, parks, playgrounds, restaurants and neighbourhood pubs and coffee shops, all near by! Take advantage of the on-site fitness room and one parking stall.

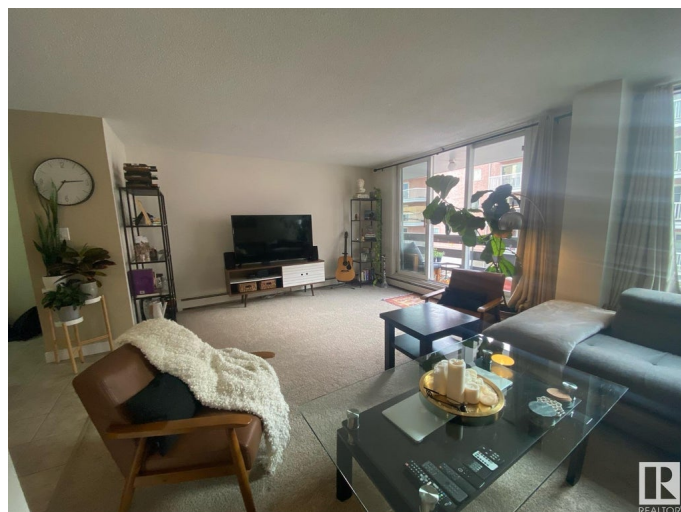
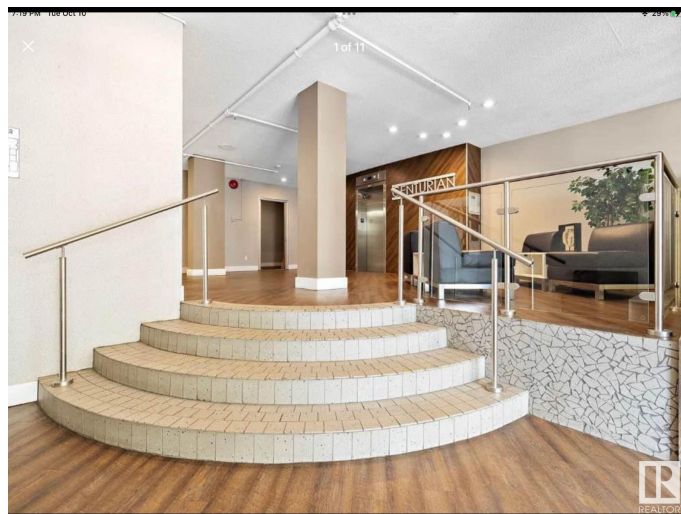
Built in 1967

### Essential Information

MLS® # E4441571

Price \$179,000

Bedrooms 2



Bathrooms	1.00
Full Baths	1
Square Footage	1,059
Acres	0.00
Year Built	1967
Type	Condo / Townhouse
Sub-Type	Apartment High Rise
Style	Single Level Apartment
Status	Active

### Community Information

Address	1003 10160 116 Street
Area	Edmonton
Subdivision	W&#248;hkw&#223;nt&#227;win
City	Edmonton
County	ALBERTA
Province	AB
Postal Code	T5K 1V9

### Amenities

Amenities	Off Street Parking, Deck, Detectors Smoke, Exercise Room, Intercom, No Animal Home, Parking-Plug-Ins, Parking-Visitor, Security Door, Storage-Locker Room
Parking	Parkade

### Interior

Appliances	See Remarks
Heating	Baseboard, Electric
# of Stories	12
Stories	1
Has Basement	Yes
Basement	None, No Basement

### Exterior

Exterior	Concrete
Exterior Features	Back Lane, Golf Nearby, Paved Lane, Public Transportation, River Valley View, Shopping Nearby, View City
Roof	Tar & Gravel
Construction	Concrete

Foundation                      Concrete Perimeter

**Additional Information**

Date Listed                      June 10th, 2025  
Days on Market                6  
Zoning                              Zone 12  
Condo Fee                        \$579

DATA IS DEEMED RELIABLE BUT IS NOT GUARANTEED ACCURATE BY THE REALTORS® ASSOCIATION OF EDMONTON. COPYRIGHT 2025 BY THE REALTORS® ASSOCIATION OF EDMONTON. ALL RIGHTS RESERVED.Trademarks are owned or controlled by the Canadian Real Estate Association (CREA) and identify real estate professionals who are members of CREA (REALTOR®, REALTORS®) and/or the quality of services they provide (MLS®, Multiple Listing Service®)  
Listing information last updated on June 16th, 2025 at 10:32am MDT