

Courtesy Of Thomas Kube Of Black Sheep Realty

\$667,000 - 4103 Aspen Drive, Edmonton

MLS® #E4441346

\$667,000

5 Bedroom, 3.00 Bathroom, 2,692 sqft

Single Family on 0.00 Acres

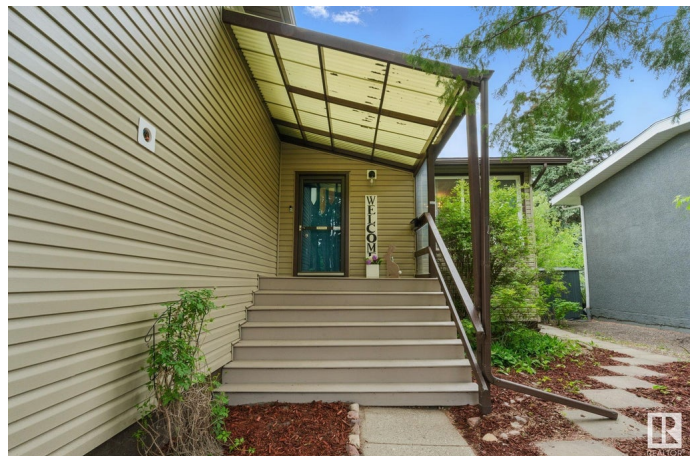
Aspen Gardens, Edmonton, AB

Located on the prestigious Aspen Drive, minutes from the ravine, this unique walkout home blends intentional design with thoughtful materials. Open-concept dining & living area features refinished knotty pine hardwood and funky chandeliers. In the kitchen & main bath, Portuguese cork adds warmth and durability underfoot, paired with Bosch & AEG appliances. A mirrored skylight brightens the foyer. Above the garage, an architecturally designed loft tucks you away in the tree canopy and offers amazing sunsets. Lower level includes 4 bedrooms, a 5-piece bath with dual vanities, and a private ensuite. A main floor bedroom offers custom built-ins and a walk-in closet. Completed with 2x6 exterior walls, new vinyl siding, freshly painted interior and exterior, and a hand-built masonry pizza oven, this home is designed for social gatherings. It is 300-700m to 4 schools: French, Catholic and public (offering Gifted and Talented programs).

Built in 1966

Essential Information

MLS® #	E4441346
Price	\$667,000
Bedrooms	5
Bathrooms	3.00



Full Baths	3
Square Footage	2,692
Acres	0.00
Year Built	1966
Type	Single Family
Sub-Type	Detached Single Family
Style	Raised Bungalow
Status	Active

Community Information

Address	4103 Aspen Drive
Area	Edmonton
Subdivision	Aspen Gardens
City	Edmonton
County	ALBERTA
Province	AB
Postal Code	T6J 2A7

Amenities

Amenities	Closet Organizers, Crawl Space, Deck, Exterior Walls- 2"x6", Fire Pit, No Animal Home, No Smoking Home, Skylight, Vaulted Ceiling, Walkout Basement
Parking Spaces	4
Parking	Double Garage Attached, Over Sized

Interior

Interior Features	ensuite bathroom
Appliances	Dishwasher-Built-In, Dryer, Garage Control, Garage Opener, Oven-Built-In, Refrigerator, Stove-Countertop Electric, Washer
Heating	Forced Air-1, Natural Gas
Fireplace	Yes
Fireplaces	Brick Facing
Stories	3
Has Basement	Yes
Basement	Full, Finished

Exterior

Exterior	Wood, Vinyl
Exterior Features	Fenced, Golf Nearby, Hillside, Landscaped, No Back Lane, Playground

Nearby, Private Setting, Public Transportation, Schools, Shopping
Nearby, Ski Hill Nearby

Roof Asphalt Shingles
Construction Wood, Vinyl
Foundation Concrete Perimeter

School Information

Elementary Westbrooke Elementary
Middle Vernon Barfield

Additional Information

Date Listed June 9th, 2025
Days on Market 7
Zoning Zone 16

DATA IS DEEMED RELIABLE BUT IS NOT GUARANTEED ACCURATE BY THE REALTORS® ASSOCIATION OF EDMONTON. COPYRIGHT 2025 BY THE REALTORS® ASSOCIATION OF EDMONTON. ALL RIGHTS RESERVED. Trademarks are owned or controlled by the Canadian Real Estate Association (CREA) and identify real estate professionals who are members of CREA (REALTOR®, REALTORS®) and/or the quality of services they provide (MLS®, Multiple Listing Service®)

Listing information last updated on June 16th, 2025 at 3:02pm MDT