

\$845,000 - 22 Eldridge Point(e), St. Albert

MLS® #E4440158

\$845,000

5 Bedroom, 5.00 Bathroom, 2,392 sqft
Single Family on 0.00 Acres

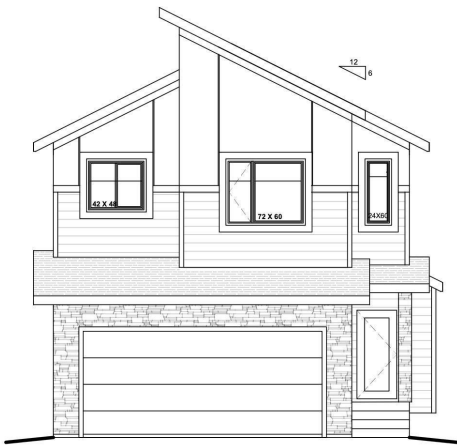
Erin Ridge North, St. Albert, AB

Beautiful 2-storey walkout home backing onto a peaceful pond with stunning sunset views and access to scenic walking paths. Three covered outdoor spaces—off the dining room, primary suite, and ground-level patio. Main floor features an open-concept kitchen, spacious living/dining areas, and a bedroom with an adjacent full bath—perfect for guests or a home office. Upstairs offers 3 bedrooms including a luxurious primary suite with a spa-inspired ensuite: soaker tub, oversized shower, double vanity, and private walk-in closet. Each upstairs bedroom has access to a full bathroom. The finished walkout basement includes a second full kitchen, family room with wet bar, games area, and a 5th bedroom. Oversized garage and close to schools, parks, shopping, and major roads. Ideal for families or multi-generational living!

Built in 2025

Essential Information

MLS® #	E4440158
Price	\$845,000
Bedrooms	5
Bathrooms	5.00
Full Baths	5
Square Footage	2,392
Acres	0.00



Year Built	2025
Type	Single Family
Sub-Type	Detached Single Family
Style	2 Storey
Status	Active

Community Information

Address	22 Eldridge Point(e)
Area	St. Albert
Subdivision	Erin Ridge North
City	St. Albert
County	ALBERTA
Province	AB
Postal Code	T8N 7Z9

Amenities

Amenities	Ceiling 9 ft., Walkout Basement, Wet Bar, 9 ft. Basement Ceiling
Parking	Double Garage Attached
Is Waterfront	Yes

Interior

Interior Features	ensuite bathroom
Appliances	See Remarks
Heating	Forced Air-1, Natural Gas
Stories	3
Has Basement	Yes
Basement	Full, Finished

Exterior

Exterior	Wood, Vinyl
Exterior Features	Backs Onto Lake, Golf Nearby, Playground Nearby, Schools, Shopping Nearby
Roof	Asphalt Shingles
Construction	Wood, Vinyl
Foundation	Concrete Perimeter

Additional Information

Date Listed	June 3rd, 2025
Days on Market	59

Zoning

Zone 24

DATA IS DEEMED RELIABLE BUT IS NOT GUARANTEED ACCURATE BY THE REALTORS® ASSOCIATION OF EDMONTON. COPYRIGHT 2025 BY THE REALTORS® ASSOCIATION OF EDMONTON. ALL RIGHTS RESERVED. Trademarks are owned or controlled by the Canadian Real Estate Association (CREA) and identify real estate professionals who are members of CREA (REALTOR®, REALTORS®) and/or the quality of services they provide (MLS®, Multiple Listing Service®)

Listing information last updated on August 1st, 2025 at 5:02pm MDT