

## \$159,900 - 5 3855 76 Street, Edmonton

MLS® #E4435615

**\$159,900**

2 Bedroom, 1.00 Bathroom, 893 sqft

Condo / Townhouse on 0.00 Acres

Michaels Park, Edmonton, AB

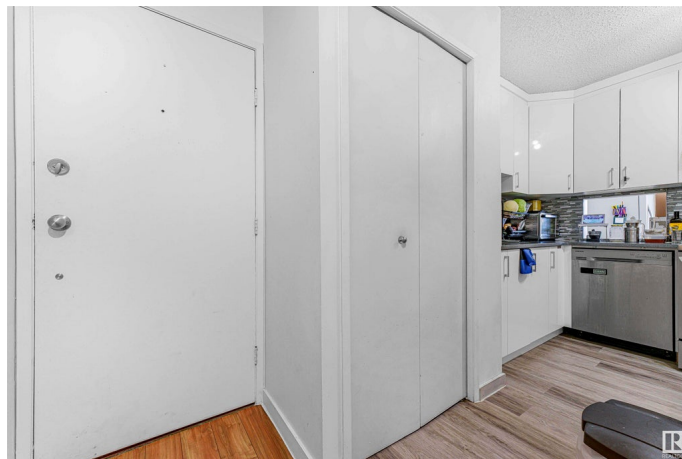
Discover your dream condo! This beautiful renovated 2-bed, 1-bath unit offers modern style & convenience in a welcoming community. The open-concept layout is perfect for relaxation & entertaining, w/large windows filling the space with natural light. Enjoy cooking in the contemporary updated kitchen with stainless steel appliances, ample cabinet space & quartz countertops. All appliances are still under extended WARRANTY from 1-3 years. Spacious & bright bedrooms provide brightness & comfortable retreat. The renovated bathroom features modern fixtures & a spa-like atmosphere w/lifetime warranty. Walking distance to excellent schools, playgrounds, FreshCo, Shoppers Drug Mart makes daily life a breeze. The condo community is well-maintained by a dedicated & responsive condo board that works hard ensuring a high quality of life for all residents. With secure entry, easy access to public transportation, parks & dining options, this condo offers the perfect blend of comfort & convenience. Must see!

Built in 1976

### Essential Information

MLS® # E4435615

Price \$159,900



Bedrooms	2
Bathrooms	1.00
Full Baths	1
Square Footage	893
Acres	0.00
Year Built	1976
Type	Condo / Townhouse
Sub-Type	Lowrise Apartment
Style	Single Level Apartment
Status	Active

### **Community Information**

Address	5 3855 76 Street
Area	Edmonton
Subdivision	Michaels Park
City	Edmonton
County	ALBERTA
Province	AB
Postal Code	T6K 2P9

### **Amenities**

Amenities	No Animal Home, No Smoking Home, Parking-Extra, Parking-Visitor
Parking Spaces	1
Parking	Stall

### **Interior**

Appliances	Dishwasher-Built-In, Dryer, Hood Fan, Oven-Microwave, Refrigerator, Stove-Electric, Washer
Heating	Baseboard, Hot Water, Natural Gas
# of Stories	3
Stories	1
Has Basement	Yes
Basement	None, No Basement

### **Exterior**

Exterior	Wood, Stucco, Vinyl
Exterior Features	Landscaped, Playground Nearby, Public Transportation, Schools, Shopping Nearby
Roof	Asphalt Shingles

Construction	Wood, Stucco, Vinyl
Foundation	Concrete Perimeter

**School Information**

Elementary	Lee Ridge School
Middle	Edith Rogers School
High	W.P. Wagner School

**Additional Information**

Date Listed	May 9th, 2025
Days on Market	7
Zoning	Zone 29
Condo Fee	\$452

DATA IS DEEMED RELIABLE BUT IS NOT GUARANTEED ACCURATE BY THE REALTORS® ASSOCIATION OF EDMONTON. COPYRIGHT 2025 BY THE REALTORS® ASSOCIATION OF EDMONTON. ALL RIGHTS RESERVED.Trademarks are owned or controlled by the Canadian Real Estate Association (CREA) and identify real estate professionals who are members of CREA (REALTOR®, REALTORS®) and/or the quality of services they provide (MLS®, Multiple Listing Service®)

Listing information last updated on May 16th, 2025 at 3:02am MDT