

## \$669,900 - 401 30 St Joseph Street, St. Albert

MLS® #E4435450

**\$669,900**

2 Bedroom, 2.00 Bathroom, 1,302 sqft

Condo / Townhouse on 0.00 Acres

Downtown (St. Albert), St. Albert, AB

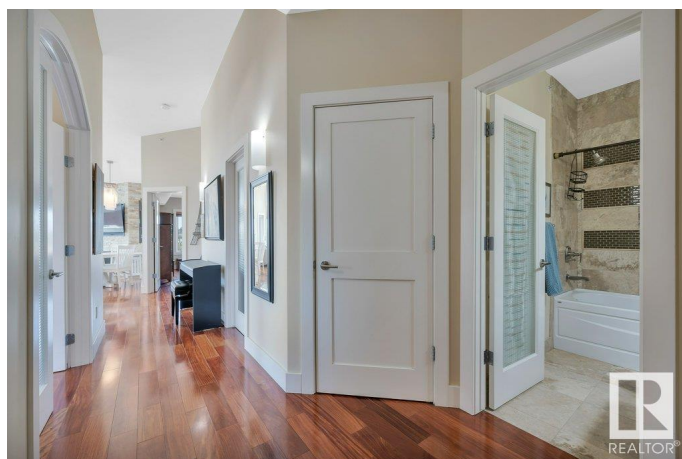
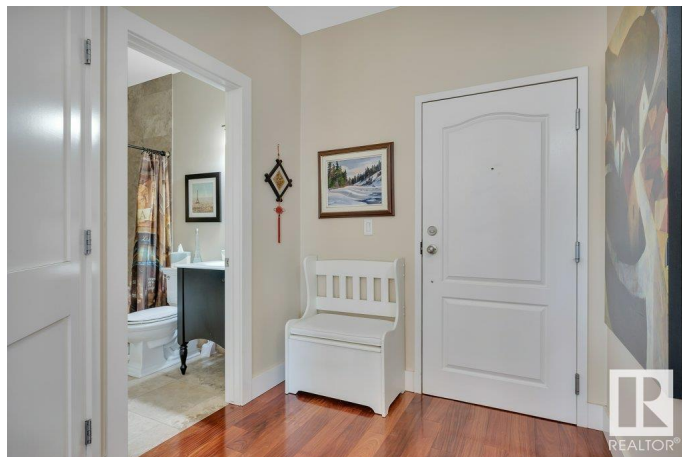
Spectacular 1301 sq. ft. executive penthouse condo in the heart of St. Albert in the prestigious Versailles building. This one-of-a-kind 2-bdrm home features soaring 20-ft coved ceilings in the great room, rich mahogany hardwood and limestone flooring thru out, a Tindlestone gas fireplace with TV niche, and oversized windows showcasing panoramic views. The chef's kitchen boasts granite countertops, stainless steel appliances, a huge island, walk-in pantry, and garden door to a spacious balcony. The luxurious primary suite offers a stunning 3-piece ensuite with walk-in shower and a large walk-in closet. A cozy bedroom/den includes a Murphy bed and double closets with sliding doors to the patio. Additional features include in-floor heating, air conditioning, a laundry room with built-in shelving and sink, and a second 4-piece bath. Enjoy 2 underground heated parking stalls, a spacious storage unit, and unbeatable access to shopping, fine dining, the Farmers Market, Arden Theatre, and the beautiful River Valley

Built in 2004

### Essential Information

MLS® # E4435450

Price \$669,900



Bedrooms	2
Bathrooms	2.00
Full Baths	2
Square Footage	1,302
Acres	0.00
Year Built	2004
Type	Condo / Townhouse
Sub-Type	Lowrise Apartment
Style	Single Level Apartment
Status	Active

### **Community Information**

Address	401 30 St Joseph Street
Area	St. Albert
Subdivision	Downtown (St. Albert)
City	St. Albert
County	ALBERTA
Province	AB
Postal Code	T8N 7C9

### **Amenities**

Amenities	Air Conditioner, Deck, Guest Suite, No Smoking Home, Parking-Visitor, Secured Parking, Security Door, Vaulted Ceiling, See Remarks, Storage Cage
Parking	Heated, Insulated, Underground

### **Interior**

Interior Features	ensuite bathroom
Appliances	Dishwasher-Built-In, Dryer, Hood Fan, Oven-Microwave, Refrigerator, Stove-Gas, Washer, Window Coverings
Heating	In Floor Heat System, Natural Gas
Fireplace	Yes
Fireplaces	Stone Facing
# of Stories	4
Stories	4
Has Basement	Yes
Basement	None, No Basement

### **Exterior**

Exterior	Wood, Brick, Metal, Stucco
Exterior Features	Golf Nearby, Landscaped, Park/Reserve, Playground Nearby, Schools, Shopping Nearby, View City, View Downtown
Roof	Metal
Construction	Wood, Brick, Metal, Stucco
Foundation	Concrete Perimeter

### **Additional Information**

Date Listed	May 9th, 2025
Days on Market	6
Zoning	Zone 24
Condo Fee	\$766

DATA IS DEEMED RELIABLE BUT IS NOT GUARANTEED ACCURATE BY THE REALTORS® ASSOCIATION OF EDMONTON. COPYRIGHT 2025 BY THE REALTORS® ASSOCIATION OF EDMONTON. ALL RIGHTS RESERVED. Trademarks are owned or controlled by the Canadian Real Estate Association (CREA) and identify real estate professionals who are members of CREA (REALTOR®, REALTORS®) and/or the quality of services they provide (MLS®, Multiple Listing Service®)

Listing information last updated on May 15th, 2025 at 3:17pm MDT