

\$419,900 - 95 South Creek Wynd, Stony Plain

MLS® #E4434824

\$419,900

3 Bedroom, 2.50 Bathroom, 1,277 sqft

Single Family on 0.00 Acres

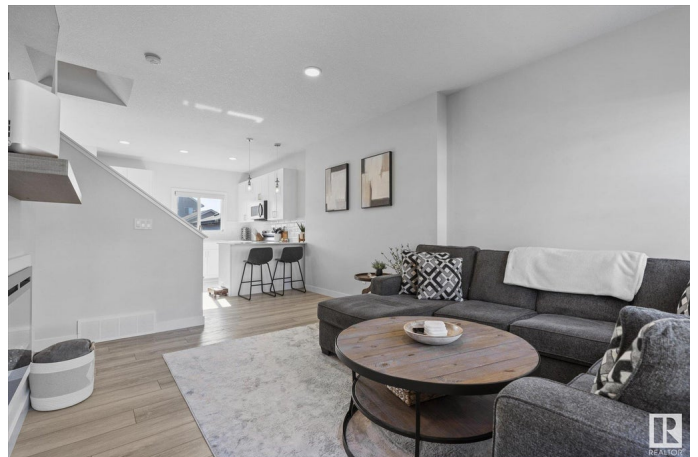
South Creek, Stony Plain, AB

Discover this beautifully maintained 2-storey home located in South Creek! With 3 bedrooms, 2.5 bathrooms and an open-concept design, this house is ready for you to move right in. The interior is clean and bright, ideal for family living. Step outside to a cute, landscaped yard featuring a cozy fire pit, perfect for gatherings or quiet evenings under the stars. The property also includes a convenient two-car garage. Enjoy the benefits of nearby amenities, including a serene pond with walking trails and access to a golf course, making this home a perfect blend of comfort and outdoor living!

Built in 2021

Essential Information

| | |
|----------------|------------------------|
| MLS® # | E4434824 |
| Price | \$419,900 |
| Bedrooms | 3 |
| Bathrooms | 2.50 |
| Full Baths | 2 |
| Half Baths | 1 |
| Square Footage | 1,277 |
| Acres | 0.00 |
| Year Built | 2021 |
| Type | Single Family |
| Sub-Type | Detached Single Family |



| | |
|--------|----------|
| Style | 2 Storey |
| Status | Active |

Community Information

| | |
|-------------|---------------------|
| Address | 95 South Creek Wynd |
| Area | Stony Plain |
| Subdivision | South Creek |
| City | Stony Plain |
| County | ALBERTA |
| Province | AB |
| Postal Code | T7Z 0J9 |

Amenities

| | |
|-----------|------------------------|
| Amenities | Deck, Fire Pit |
| Parking | Double Garage Detached |

Interior

| | |
|-------------------|--|
| Interior Features | ensuite bathroom |
| Appliances | Dishwasher-Built-In, Dryer, Garage Control, Garage Opener, Microwave Hood Fan, Refrigerator, Stove-Electric, Washer, Window Coverings, TV Wall Mount |
| Heating | Forced Air-1, Natural Gas |
| Fireplace | Yes |
| Fireplaces | Insert |
| Stories | 2 |
| Has Basement | Yes |
| Basement | Full, Unfinished |

Exterior

| | |
|-------------------|---|
| Exterior | Wood, Stone, Vinyl |
| Exterior Features | Back Lane, Fenced, Golf Nearby, Landscaped, Playground Nearby, Schools, Shopping Nearby |
| Roof | Asphalt Shingles |
| Construction | Wood, Stone, Vinyl |
| Foundation | Concrete Perimeter |

Additional Information

| | |
|----------------|---------------|
| Date Listed | May 6th, 2025 |
| Days on Market | 9 |
| Zoning | Zone 91 |

DATA IS DEEMED RELIABLE BUT IS NOT GUARANTEED ACCURATE BY THE REALTORS® ASSOCIATION OF EDMONTON. COPYRIGHT 2025 BY THE REALTORS® ASSOCIATION OF EDMONTON. ALL RIGHTS RESERVED.Trademarks are owned or controlled by the Canadian Real Estate Association (CREA) and identify real estate professionals who are members of CREA (REALTOR®, REALTORS®) and/or the quality of services they provide (MLS®, Multiple Listing Service®)

Listing information last updated on May 15th, 2025 at 7:17am MDT