

\$559,900 - 1624 168 Street, Edmonton

MLS® #E4433568

\$559,900

3 Bedroom, 2.50 Bathroom, 1,728 sqft

Single Family on 0.00 Acres

Glenridding Heights, Edmonton, AB

This stunning upgraded Glenridding Heights home blends modern luxury with comfort, featuring 9' ceilings with elegant rounded corners throughout and durable luxury vinyl flooring. The gourmet kitchen shines with premium marble countertops, upgraded stainless steel appliances including a professional-grade range hood and convenient garburator, while the bright dining area benefits from additional windows filling the space with natural light. The upper level features a spacious bonus room perfect for entertainment or work-from-home needs, along with a luxurious primary suite boasting a spa-inspired 5pc ensuite and two generously-sized secondary bedrooms. Step outside to your private retreat featuring a low-maintenance composite deck leading to a charming stone-based gazebo - ideal for outdoor living. Complete with central A/C, an attached double garage, and a prime location just moments from top-rated schools, scenic parks, shopping centers and quick Anthony Henday access.

Built in 2017

Essential Information

MLS® # E4433568

Price \$559,900



Bedrooms	3
Bathrooms	2.50
Full Baths	2
Half Baths	1
Square Footage	1,728
Acres	0.00
Year Built	2017
Type	Single Family
Sub-Type	Detached Single Family
Style	2 Storey
Status	Active

Community Information

Address	1624 168 Street
Area	Edmonton
Subdivision	Glenridding Heights
City	Edmonton
County	ALBERTA
Province	AB
Postal Code	T6W 3R7

Amenities

Amenities	Air Conditioner, Ceiling 9 ft., Deck, See Remarks
Parking	Double Garage Attached

Interior

Interior Features	ensuite bathroom
Appliances	Dishwasher-Built-In, Dryer, Garage Control, Garage Opener, Garburator, Hood Fan, Refrigerator, Stove-Gas, Washer, Window Coverings
Heating	Forced Air-1, Natural Gas
Stories	2
Has Basement	Yes
Basement	Full, Unfinished

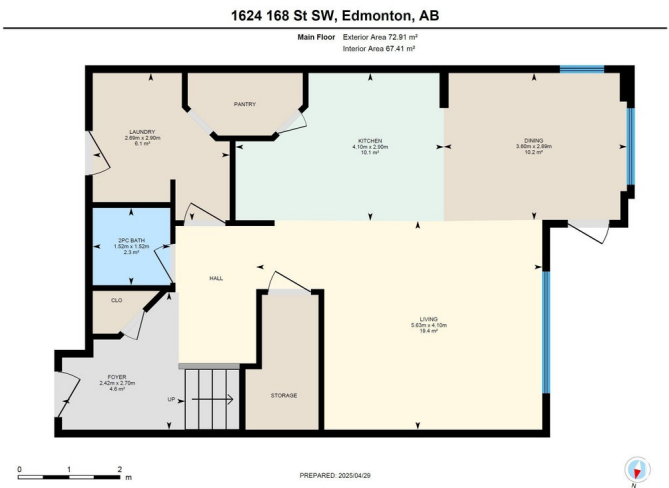
Exterior

Exterior	Wood, Vinyl
Exterior Features	Schools, Shopping Nearby, See Remarks
Roof	Asphalt Shingles
Construction	Wood, Vinyl

Foundation Concrete Perimeter

Additional Information

Date Listed May 1st, 2025
Days on Market 1
Zoning Zone 56



DATA IS DEEMED RELIABLE BUT IS NOT GUARANTEED ACCURATE BY THE REALTORS® ASSOCIATION OF EDMONTON. COPYRIGHT 2025 BY THE REALTORS® ASSOCIATION OF EDMONTON. ALL RIGHTS RESERVED.Trademarks are owned or controlled by the Canadian Real Estate Association (CREA) and identify real estate professionals who are members of CREA (REALTOR®, REALTORS®) and/or the quality of services they provide (MLS®, Multiple Listing Service®)

Listing information last updated on May 2nd, 2025 at 3:32am MDT