

## \$649,000 - 603 Suncrest Way, Sherwood Park

MLS® #E4433511

**\$649,000**

5 Bedroom, 3.50 Bathroom, 2,232 sqft

Single Family on 0.00 Acres

Summerwood, Sherwood Park, AB

Welcome to this beautiful two-storey Pacesetter home in Summerwood offering over 2230 sqft of living space. This home has the perfect blend of style and functionality, with craftsman detailing throughout. Upon entering, youâ€™ll be greeted by a bright formal dining room/den, ideal for a home office, entertaining, or quiet relaxation. The large living room is perfect for entertaining, features a cozy gas fireplace, and has rear yard views. Onto the kitchen, which features abundant cabinetry, a corner pantry, and a breakfast bar. Upstairs, a massive bonus room with a vaulted ceiling offers endless possibilities, while the luxurious primary suite includes a 4-piece ensuite with a soaker tub and a large walk-in closet. Two large bedrooms and another full bathroom complete this level. The fully finished basement includes two additional bedrooms, a 4-piece bath, and a spacious family room. The south-facing backyard offers plenty of sunlight, with a large deck & private backyard. This home is truly one to see!

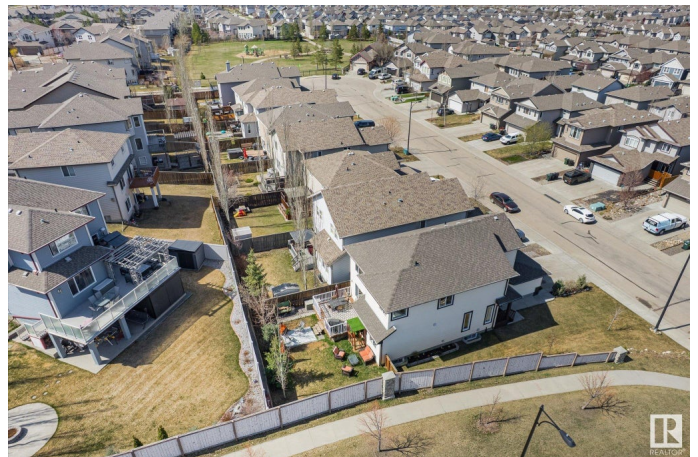
Built in 2009

### Essential Information

MLS® # E4433511

Price \$649,000

Bedrooms 5



Bathrooms	3.50
Full Baths	3
Half Baths	1
Square Footage	2,232
Acres	0.00
Year Built	2009
Type	Single Family
Sub-Type	Detached Single Family
Style	2 Storey
Status	Active

### Community Information

Address	603 Suncrest Way
Area	Sherwood Park
Subdivision	Summerwood
City	Sherwood Park
County	ALBERTA
Province	AB
Postal Code	T8H 0G7

### Amenities

Amenities	Deck
Parking	Double Garage Attached

### Interior

Interior Features	ensuite bathroom
Appliances	Dishwasher-Built-In, Dryer, Garage Control, Garage Opener, Hood Fan, Oven-Microwave, Stove-Electric, Washer, Window Coverings, Refrigerators-Two
Heating	Forced Air-1, Natural Gas
Stories	3
Has Basement	Yes
Basement	Full, Finished

### Exterior

Exterior	Wood, Vinyl
Exterior Features	Corner Lot, Fenced, Golf Nearby, Landscaped, Playground Nearby, Public Swimming Pool, Public Transportation, Schools, Shopping Nearby, Ski Hill Nearby

Roof	Asphalt Shingles
Construction	Wood, Vinyl
Foundation	Concrete Perimeter

**Additional Information**

Date Listed	April 30th, 2025
Days on Market	1
Zoning	Zone 25

DATA IS DEEMED RELIABLE BUT IS NOT GUARANTEED ACCURATE BY THE REALTORS® ASSOCIATION OF EDMONTON. COPYRIGHT 2025 BY THE REALTORS® ASSOCIATION OF EDMONTON. ALL RIGHTS RESERVED.Trademarks are owned or controlled by the Canadian Real Estate Association (CREA) and identify real estate professionals who are members of CREA (REALTOR®, REALTORS®) and/or the quality of services they provide (MLS®, Multiple Listing Service®)

Listing information last updated on May 1st, 2025 at 6:32am MDT