

\$0 - 4614 101 Street, Edmonton

MLS® #E4432174

\$0

0 Bedroom, 0.00 Bathroom,
Industrial on 0.00 Acres

Papaschase Industrial, Edmonton, AB

4610/12/14 â€“ 101 Street offers up to 10,731 sq.ft.Â± of office/warehouse space with flexible bay sizes starting at 3,577 sq.ft.Â±. The property includes a secured 7,200 sq.ft.Â± yard, three 12â€™™ x 14â€™™ grade-level doors, sump drainage, and fibre optics availability. Zoned IM (Medium Industrial), with 15â€™™ ceiling height and radiant heat in the warehouse. The site is located near major routes including Whitemud Drive, Calgary Trail, Gateway Boulevard, and Anthony Henday Drive.

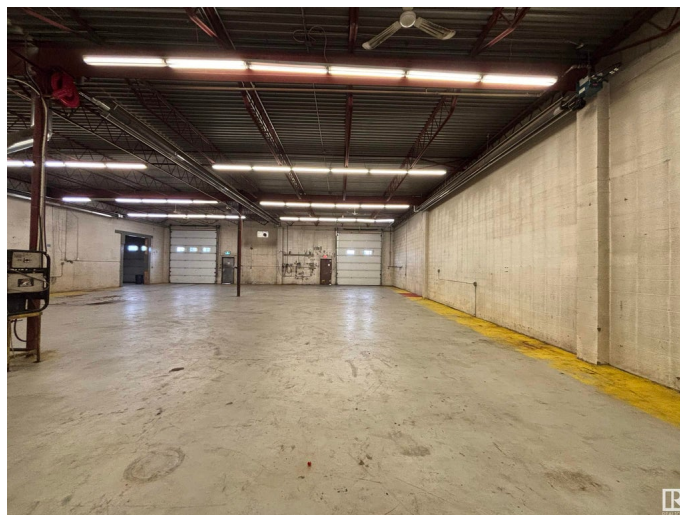
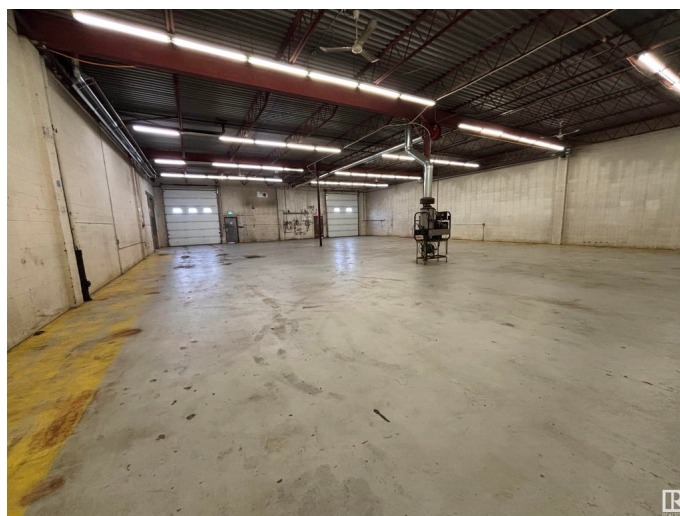
Built in 1977

Essential Information

MLS® #	E4432174
Bathrooms	0.00
Acres	0.00
Year Built	1977
Type	Industrial
Status	Active

Community Information

Address	4614 101 Street
Area	Edmonton
Subdivision	Papaschase Industrial
City	Edmonton
County	ALBERTA



Province	AB
Postal Code	T6E 5G9

Exterior

Exterior	Mixed
Construction	Mixed

Additional Information

Date Listed	April 22nd, 2025
Days on Market	9
Zoning	Zone 41

DATA IS DEEMED RELIABLE BUT IS NOT GUARANTEED ACCURATE BY THE REALTORS® ASSOCIATION OF EDMONTON. COPYRIGHT 2025 BY THE REALTORS® ASSOCIATION OF EDMONTON. ALL RIGHTS RESERVED. Trademarks are owned or controlled by the Canadian Real Estate Association (CREA) and identify real estate professionals who are members of CREA (REALTOR®, REALTORS®) and/or the quality of services they provide (MLS®, Multiple Listing Service®)

Listing information last updated on May 1st, 2025 at 8:02am MDT