

\$195,000 - 101 10528 77 Avenue, Edmonton

MLS® #E4423560

\$195,000

2 Bedroom, 2.00 Bathroom, 965 sqft

Condo / Townhouse on 0.00 Acres

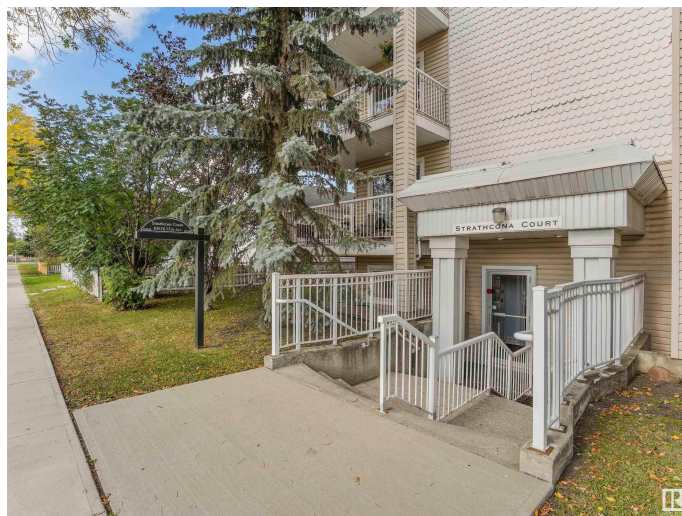
Queen Alexandra, Edmonton, AB

Investors, first-time home buyers and everyone in between! Here's an excellent opportunity to live just a few blocks from Whyte Ave and the U of A. This main level unit has two large bedrooms and two full bathrooms, of which one is an ensuite. There is definitely plenty of space here with a very impressive open concept living room, dining and kitchen. On top of this, there is also a generous amount of storage room, with additional walk-in closets, hallway closets, adjoining storage room and more storage in a shared but secured storage room. With a South facing windows, this area basks in natural light. The outdoor patio also offers a quant space for enjoying the beautiful outdoors. This complex is currently an 18+ building.

Built in 2000

Essential Information

| | |
|----------------|-----------|
| MLS® # | E4423560 |
| Price | \$195,000 |
| Bedrooms | 2 |
| Bathrooms | 2.00 |
| Full Baths | 2 |
| Square Footage | 965 |
| Acres | 0.00 |
| Year Built | 2000 |



| | |
|----------|------------------------|
| Type | Condo / Townhouse |
| Sub-Type | Lowrise Apartment |
| Style | Single Level Apartment |
| Status | Active |

Community Information

| | |
|-------------|---------------------|
| Address | 101 10528 77 Avenue |
| Area | Edmonton |
| Subdivision | Queen Alexandra |
| City | Edmonton |
| County | ALBERTA |
| Province | AB |
| Postal Code | T6E 1N1 |

Amenities

| | |
|----------------|--|
| Amenities | No Smoking Home, Parking-Plug-Ins, Parking-Visitor, Patio, Storage-Locker Room |
| Parking Spaces | 1 |
| Parking | Stall |

Interior

| | |
|-------------------|---|
| Interior Features | ensuite bathroom |
| Appliances | Dishwasher-Built-In, Microwave Hood Fan, Refrigerator, Stacked Washer/Dryer, Stove-Electric |
| Heating | Forced Air-1, Natural Gas |
| Fireplace | Yes |
| Fireplaces | Glass Door |
| # of Stories | 4 |
| Stories | 1 |
| Has Basement | Yes |
| Basement | None, No Basement |

Exterior

| | |
|-------------------|---|
| Exterior | Wood, Vinyl |
| Exterior Features | Back Lane, Landscaped, Low Maintenance Landscape, Paved Lane, Public Transportation, Schools, Shopping Nearby |
| Roof | Asphalt Shingles |
| Construction | Wood, Vinyl |
| Foundation | Concrete Perimeter |

Additional Information

| | |
|----------------|-----------------|
| Date Listed | March 1st, 2025 |
| Days on Market | 62 |
| Zoning | Zone 15 |
| Condo Fee | \$575 |

DATA IS DEEMED RELIABLE BUT IS NOT GUARANTEED ACCURATE BY THE REALTORS® ASSOCIATION OF EDMONTON. COPYRIGHT 2025 BY THE REALTORS® ASSOCIATION OF EDMONTON. ALL RIGHTS RESERVED.Trademarks are owned or controlled by the Canadian Real Estate Association (CREA) and identify real estate professionals who are members of CREA (REALTOR®, REALTORS®) and/or the quality of services they provide (MLS®, Multiple Listing Service®)

Listing information last updated on May 2nd, 2025 at 6:02pm MDT