

\$430,000 - 430 11044 82 Avenue, Edmonton

MLS® #E4344261

\$430,000

0 Bedroom, 0.00 Bathroom,
Office on 0.00 Acres

Garneau, Edmonton, AB

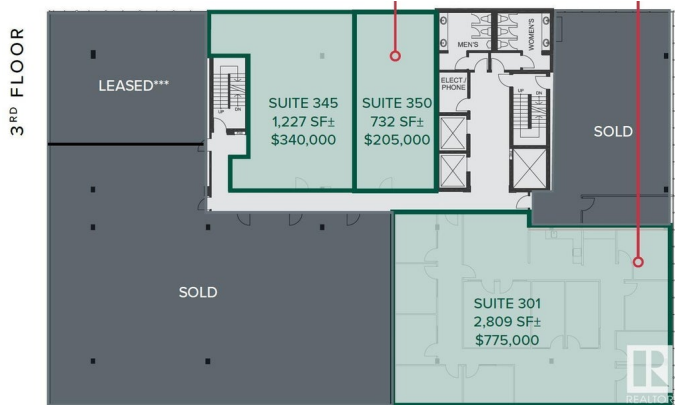
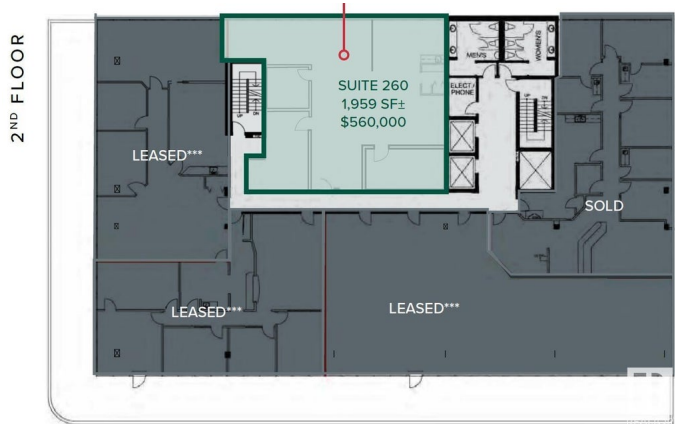
The Garneau Professional Centre is located on Whyte Ave within walking distance to the U of A. This building has recently been converted into condos, meaning these units have never been for sale individually until now. Excellent opportunity for owner/user groups. Instead of paying rent, build equity and put your money back into your pocket. Ideal for medical and professional users. Building Features include underground parking, ample visitor parking, signage opportunities facing Whyte Avenue traffic, elevators and over \$1M in common area renovations. There are several size options available from 732 Sq. Ft. up to 8,353 Sq. Ft. with a healthy mix of developed medical and office space as well as some raw units ready for your customization.

Built in 1981

Essential Information

MLS® #	E4344261
Price	\$430,000
Bathrooms	0.00
Acres	0.00
Year Built	1981
Type	Office
Status	Active

Community Information



Address	430 11044 82 Avenue
Area	Edmonton
Subdivision	Garneau
City	Edmonton
County	ALBERTA
Province	AB
Postal Code	T6G 0T2

Exterior

Exterior	Brick
Construction	Brick

Additional Information

Date Listed	June 6th, 2023
Days on Market	741
Zoning	Zone 15

DATA IS DEEMED RELIABLE BUT IS NOT GUARANTEED ACCURATE BY THE REALTORS® ASSOCIATION OF EDMONTON. COPYRIGHT 2025 BY THE REALTORS® ASSOCIATION OF EDMONTON. ALL RIGHTS RESERVED. Trademarks are owned or controlled by the Canadian Real Estate Association (CREA) and identify real estate professionals who are members of CREA (REALTOR®, REALTORS®) and/or the quality of services they provide (MLS®, Multiple Listing Service®)

Listing information last updated on June 16th, 2025 at 11:02am MDT